

PRULink Global Growth Fund

Applicable until 31 August 2023

All data is as of 31 December 2021 unless otherwise stated

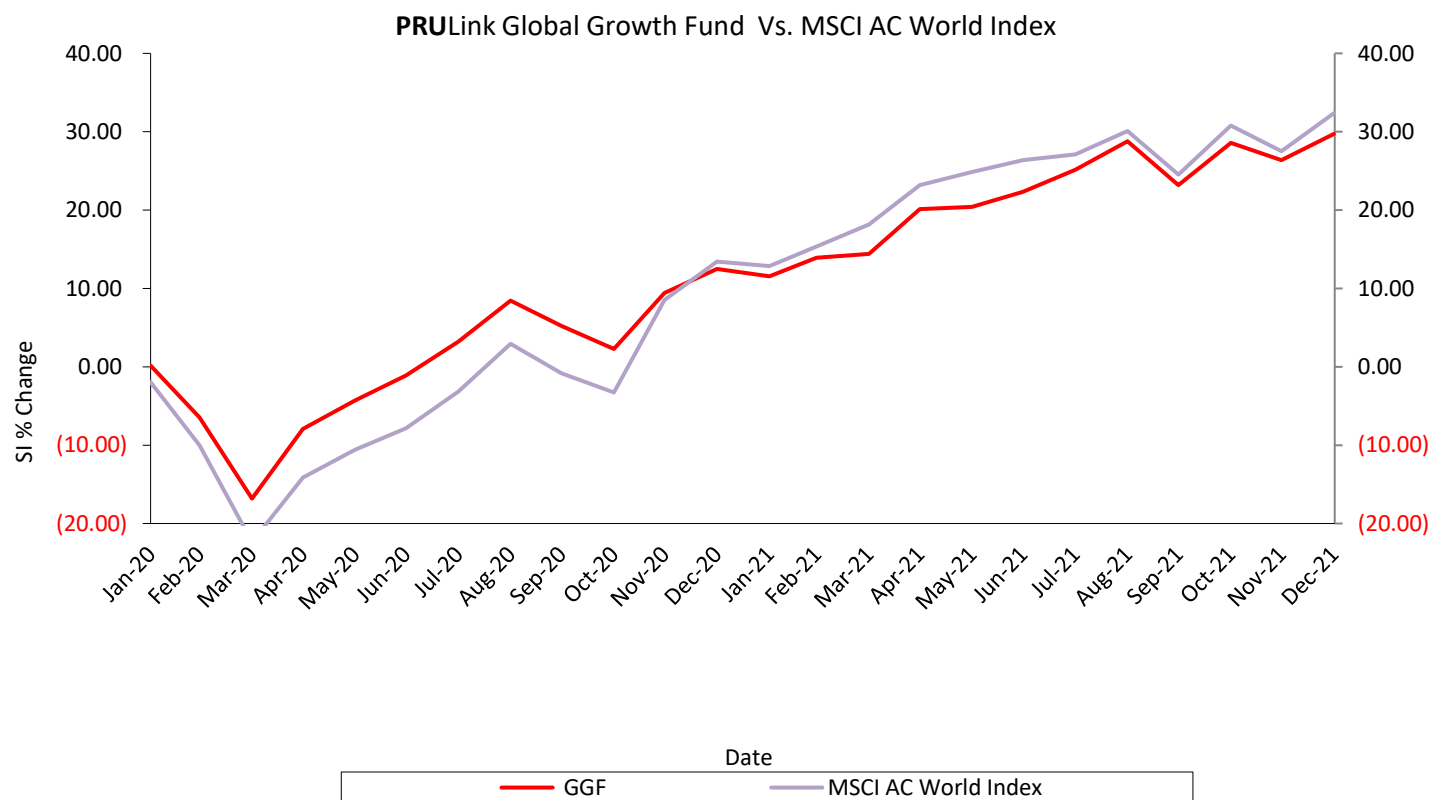
Features of Fund	
Investment Objective	PRULink Global Growth Fund (“the Fund”) aims to generate long-term returns through investing primarily into a portfolio of assets globally including equities, equity-related securities, deposits, currencies, derivatives or any other financial instruments directly, and/or indirectly through the use of any funds.
Investment Strategy & Approach	The Fund seeks to invest primarily in investment funds [Sub-Fund(s)] to achieve the investment objective. The Sub-Fund(s) will be monitored to assess the performance, processes, styles and positioning. The allocation to, or the Sub-Fund(s) may change if it is deemed unsuitable to meet the Fund’s objectives. <i>Note: Refer to additional disclosure for details of the Sub-Fund(s).</i>
Asset Allocation	The Fund invests up to 100% of the Fund’s NAV in the Sub-Fund(s) determined by the Fund Manager. The balance of the Fund’s NAV will be invested in liquid assets.
Performance Benchmark	The benchmark will vary based on the Sub-Fund(s). At inception, the benchmark is: MSCI AC World Index <i>For more information on benchmark kindly refer to www.msci.com</i>
Fund Manager	Prudential Assurance Malaysia Berhad 198301012262 (107655-U)
Fees & Charges	
Fund Management Charge	1.50% p.a.
Other Charge, if any	Nil

PRULink Global Growth Fund

Applicable until 31 August 2023

All data is as of 31 December 2021 unless otherwise stated

Fund Performance



Notice: The graphs are included for illustrative purposes only. Past performance of The Fund is not an indication of its future performance.

Year	Actual Performance PRULink Global Growth Fund	Benchmark 100% MSCI AC World Index
2020	12.48%*	13.43%*
2021	15.32%	16.68%

*Fund Performance is from fund launch date until year end of the same year (non-annualised return).

Sources: Lipper IM and Bloomberg, 31 December 2021

Notice: Past performance is not an indication of its future performance. This is strictly the performance of the investment / underlying funds, and not the returns earned on the actual premiums paid of the investment-linked insurance product.

Basis of calculation of past performance:

$$= \left(\frac{\text{Net Asset Value at the end of Year } n}{\text{Net Asset Value at the end of Year } n - 1} - 1 \right) \%$$

PRULink Global Growth Fund

Applicable until 31 August 2023

All data is as of 31 December 2021 unless otherwise stated

Additional Disclosure for PRULink Global Growth Fund

At inception, the Fund will invest into a Sub-Fund called United Global Quality Equity Fund - MYR Hedged Class (“Sub-Fund”) which is managed by UOB Asset Management (Malaysia) Berhad. The Sub-Fund, in turn, feeds into United Global Quality Growth Fund (class Z USD Dist) (“Target Fund”) which is managed by UOB Asset Management Ltd, Singapore and sub-managed by Wellington Management Singapore Pte. Ltd.

The Sub-Fund seeks to achieve its investment objective by investing a minimum of 90% of its NAV in the Target Fund at all times. Accordingly, the Sub-Fund will have a passive strategy as all the investment decisions will be made at the Target Fund level.

The Sub-Fund Manager may use financial derivatives such as options, futures contracts, forward contracts and swaps for the purpose of hedging. The Sub-Fund Manager may also take temporary defensive positions that may be inconsistent with the Sub-Fund’s investment strategy in response to adverse economic, political or any market conditions. In such circumstances, the Sub-Fund may hold up to 100% of its NAV in liquid assets as a defensive strategy.

The Target Fund seeks to provide long term total return by investing in equity and equity-related securities of companies listed and traded on stock exchanges globally.

The Target Fund focuses on identifying market-leading companies with growing industry market share, quality balance sheets and strong management teams. These companies often have a history of successful new products, innovative ways of doing business, or having opportunities to expand globally. The Target Fund also seeks to invest in companies with positive long term revisions, operating efficiency, and the ability to generate increasing return on capital.

The Target Fund invests primarily in equity securities. Subject to the foregoing, the Target Fund may invest in other securities including, without limitation, exchange traded funds and equity-related securities such as depositary receipts. While the Target Fund is not constrained by market capitalisation, country, sector or industry, the companies it seeks to invest in typically have market capitalisation exceeding USD3 billion with sufficient trading volume.

The Target Fund’s investment process first begins with screening the broad universe of securities included in global equity indices. From there, the investable universe is reduced to approximately 750 companies. The Target Fund then employs a bottom-up investment approach to identify companies based on a balance of metrics such as quality, growth, valuation and capital returns.

The Target Fund will only use financial derivative instruments such as participatory notes for the purpose of accessing certain International Organization of Securities Commission (IOSCO) countries. Under such circumstances, the exposure of the Target Fund in participatory notes will not exceed 10% of the Target Fund’s net asset value.

In the event of extreme market conditions or severe market stress or disruptions, or if there are no suitable investment opportunities for the Target Fund at any time, the Target Fund may temporarily hold up to 100% of its assets in cash and/or place in cash deposits or invest in money market instruments. A portion of the Target Fund’s assets may also be retained in liquid investments or cash for liquidity purposes.

The fund performance for the underlying Sub-Fund United Global Quality Equity Fund - MYR Hedged Class as at 31 December 2021 is as follows:

PRULink Global Growth Fund

Applicable until 31 August 2023

All data is as of 31 December 2021 unless otherwise stated

Year	2021	2020	2019	2018	2017	2016
Net Performance	15.89%	16.15%	28.28%	-2.21%	24.15%	-2.28%*

*Fund Performance is from fund launch date until year end of the same year (non-annualised return).

Note: The above return is for the Sub-Fund (MYR Hedged Class) which is denominated in MYR, managed by UOB Asset Management (Malaysia) Berhad.

Source: UOBAM as at 31 December 2021

The fund performance for the underlying Target Fund United Global Quality Growth Fund (class Z USD Dist) as at 31 December 2021 is as follows:

Year	2021	2020	2019	2018	2017	2016
Net Performance	3.00%	20.10%	29.39%	-2.83%	26.00%	-2.60%*

*Fund Performance is from fund launch date until year end of the same year (non-annualised return).

Note: The above return is for the Target Fund which is denominated in USD, sub-managed by Wellington Management Singapore Pte. Ltd. For the above return (2016 - 2020) is of United Global Quality Growth class USD Dist and return (2021 – 2022) is of the United Global Quality Growth class Z USD Dist.

Source: UOBAM as at 31 December 2021

Management fees may be charged at the Fund, Sub-Fund(s) and/or Target Fund(s) level. Please note that you will be charged a maximum of 1.50% p.a., being the combined annual fund management charge at the Fund, Sub-Fund(s) and Target Fund(s) levels. In addition, the Fund may incur hedging cost when derivatives (e.g. currency forward) are used for hedging purpose.

Sub-Fund(s) and Target Fund(s) with investment strategies to invest in Exchange Traded Funds (“ETF”) or other Collective Investment Schemes may incur additional expenses at the Sub-Fund(s) and Target Fund(s) levels which are taken as part of the investment strategy considerations to deliver the fund performance.

Investment Risks for PRULink Global Growth Fund

The Fund is subjected to investment risks including the possible loss of the principal amount invested. The value of the units may fall as well as rise. In addition, the Fund is subjected to specific risk including and not limiting to:

General Risks when Investing in the Fund

Market Risk

Market risk refers to potential losses that may arise from adverse changes in the market conditions. Market conditions are generally, affected by, amongst others, economic and political stability. If the market which the Fund invests in suffers a downturn or instability due to adverse economic or political conditions, this may adversely impact the market prices of the investments of the Fund.

PRULink Global Growth Fund

Applicable until 31 August 2023

All data is as of 31 December 2021 unless otherwise stated

Liquidity Risk

Liquidity risk refers to two scenarios. The first scenario is where an investment cannot be sold due to unavailability of a buyer for that investment. The second scenario is where the investment is thinly traded. Should the investments in the Target Fund(s) be thinly traded, this may cause the Fund to dispose the investment at an unfavorable price in the market and may adversely affect investor's investment. This risk may be mitigated through stringent security selection process.

Inflation Risk

This refers to the likelihood that an investor's investments do not keep pace with inflation, thus, resulting in the investor's decreasing purchasing power even though the investment in monetary terms may have increased.

Interest Rate Risk

Interest rate risk is a general risk affecting conventional funds. This is so even though conventional funds only invest in investments that are in accordance with the mandate. The reason for this is because a high level of interest rates will inevitably affect corporate profits and this will have an impact on the value of both equity and debt securities. This risk is crucial in a bond fund since a bond portfolio management depends on forecasting interest rate movements. Prices of bonds move inversely to interest rate movements therefore as interest rates rise, the prices of bond decrease and vice versa. Furthermore, bonds with longer maturity and lower profit rates are more susceptible to interest rate movements.

Credit / Default Risk

Bonds are subject to credit / default risk in the event that the issuer of the instrument is faced with financial difficulties, which may decrease their credit worthiness. This in turn may lead to a default in the payment of principal and interest.

Risk of Non-Compliance

This risk arises from non-compliance with laws, rules and regulations, prescribed practices and the management company's internal policies and procedures, for example, due to oversight by the management company. Such non-compliance may force the management company to sell down securities of the Fund at a loss to rectify the non-compliance and in turn may adversely affect the value of investors' investment in the Fund. To mitigate this risk, the Fund Manager has put in place internal controls to ensure its continuous compliance with laws, rules and regulations, prescribed practices and the Fund Manager's internal policies and procedures.

Concentration Risk

This is the risk of a fund focusing a greater portion of its assets in a smaller selection of investments. The fall in price of a particular equity and / or fixed income investment will have a greater impact on the funds and thus greater losses. This risk may be minimised by the manager conducting even more rigorous fundamental analysis before investing in each security.

Management Company Risk

The performance of the Fund depends on the experience, expertise and knowledge of the management company. Should there be lack of any of the above qualities by the management company, it may adversely affect the performance of the Fund.

Currency Risk

The Fund is denominated in MYR, while the Sub-Fund(s) and Target Fund(s) may be denominated in other currencies. The performance of the Fund may be affected by movements in the exchange rate between the MYR and the Sub-Fund(s)'s and Target Fund(s)'s denominated currency. Where applicable, a currency hedging instrument or a currency hedged class of the Sub-Fund(s) and/or Target Fund(s) may be used to minimise currency risk.

PRULink Global Growth Fund

Applicable until 31 August 2023

All data is as of 31 December 2021 unless otherwise stated

Derivatives Risk

Derivatives may potentially be used to hedge against any risk that may be derived from investing in the Sub-Fund(s) and/or Target Fund(s), such as, but not limited to, currency risk.

Portfolio Risk

The Fund is intended for investors who can accept the risks associated with investing primarily in the securities of the type held in the Fund. Investments in equities will be subject to the risks associated with equity and equity-related securities, including fluctuations in market prices, adverse issuer or market information and the fact that equity and equity-related interests are subordinate in the right of payment to other corporate securities, including debt securities. Likewise, investments in fixed income securities will be subjected to the risks associated with debt securities including credit and interest rate risk, and the additional risks associated with high-yield debt securities, loan participations and derivative securities. In addition, investors should be aware of the risks associated with the active management techniques that are expected to be employed by the Fund.

Specific Risks when Investing in the Sub-Fund

Risk of Passive Strategy

The Sub-Fund adopts a passive strategy of investing a minimum of 90% of its NAV into the Target Fund at all times. This passive strategy would result in the Sub-Fund being exposed to the risk of its NAV declining when the Target Fund's NAV declines. All investment decisions on the Target Fund are left with the Target Fund's fund manager.

Currency Risk

As the investments of the Sub-Fund may be denominated in currencies other than the base currency, any fluctuation in the exchange rate between the base currency and currencies in which the investments are denominated may have an impact on the value of these investments.

In this case, the Sub-Fund will be investing in the Class Z USD Dist of the Target Fund which is denominated in USD. Hence, fluctuations in the exchange rates of USD against the MYR may affect the NAV of the Sub-Fund, and consequently the NAV per unit of the Sub-Fund.

Investors in the MYR Hedged Class of the Sub-Fund will be subject to a lower currency risk at the Sub-Fund level as the Manager will mitigate this risk by hedging the foreign currency exposure. Investors should note that by employing this hedging, investors would not be able to enjoy the additional currency gains when USD moves favourably against the MYR. Additional transaction costs of hedging will also be borne by investors in the MYR Hedged Class of the Sub-Fund.

Derivatives Risk

Derivatives may potentially be used to hedge against any risk that may be derived from investing in the Target Fund, such as, but not limited to, currency risk.

Risk of Compulsory Realisation of the Target Fund

As the Sub-Fund will be investing a minimum of 90% of its NAV in the Target Fund, any event of compulsory realisation occurred on the Target Fund will have an impact to the Sub-Fund.

PRULink Global Growth Fund

Applicable until 31 August 2023

All data is as of 31 December 2021 unless otherwise stated

Under such circumstances, the Sub-Fund Manager, in consultation with the trustee will call for a unit holder's meeting to decide on whether to terminate the Sub-Fund or replace the Target Fund with a new target fund with similar investment objective.

Specific Risks when Investing in the Target Fund

Security Risk

Adverse price movements of a particular security invested by the Target Fund may adversely affect the Target Fund's net asset value. The Target Fund Manager strives to mitigate the impact of a particular security risk through portfolio diversification, which will help spread the element of risk.

Fund Management of Target Fund Risk

While the Fund Manager will exercise due skill and care in selecting the Target Fund, it does not have control over the management of the Target Fund and there is no guarantee that the investment objectives will be met. This may result in policyholders suffering losses in their investments in the Target Fund.

The Target Fund may change its objectives and become inconsistent with the objective of the Fund. In such instances, the Fund Manager will replace the Target Fund with another collective investment scheme which the Fund Manager considers to be more appropriate in meeting the objective of the Fund.

Errors in Calculation of the Net Asset Value of the Target Fund's Risk

There is a possibility there are errors in calculation of the net asset value of the Target Fund. In the event such errors occur, the net asset value of the Target Fund will be affected hence, the Target Fund will comply with the rules set forth in the relevant regulatory provisions applicable to the Target Fund. Compensation, if any, paid by the Target Fund (subject to the laws of the jurisdiction in which such Target Fund is domiciled), will be credited to the Fund as and when compensation is received.

In view of the foregoing, policyholders must be aware that there are circumstances where neither the Target Fund nor the Fund Manager will be bound to compensate final beneficial owners.

Liquidity Risk

Liquidity risk here refers to two scenarios. The first scenario is where the allocated liquidity of the Target Fund is insufficient to meet redemption needs. The second scenario is where the Target Fund is thinly traded. Should the investments in the Target Fund be thinly traded, this may cause the Target Fund to dispose the investment at an unfavorable price in the market and may adversely affect investors' investment. This risk may be mitigated through stringent security selection process.

Countries or Foreign Securities Risk

This risk is associated with investments in securities listed or domiciled in countries other than the country of domicile. Any changes in the economic fundamentals, social and political stability, uncertainty or changes in countries' official currencies, currency movements and foreign investments policies in these countries may increase the volatility in asset values, liquidity and default risk which may have an impact on the prices of the securities that the Target Fund invests in and consequently may affect the net asset value of the Target Fund.

PRULink Global Growth Fund

Applicable until 31 August 2023

All data is as of 31 December 2021 unless otherwise stated

Investments in certain markets may be restricted or controlled. In some countries, direct investments in securities may be prohibited and restricted due to regulatory requirements. These limitations may increase transaction costs and adversely affect a security's liquidity and the price in connection with the security.

The Target Fund Manager will monitor and observe the developments in these countries where assets of the Target Fund are allocated. In addition, the Target Fund Manager will also employ a systematic investment process, which includes regular review, to manage and mitigate this risk.

Currency Risk

The Target Fund's underlying investments may be denominated in their local currency, which may differ from the Target Fund's currency of denomination. The performance of the Target Fund may be affected by movements in the exchange rate between the local currency of its underlying investments and the Target Fund's denominated currency.

Charges to Capital Risk

The Target Fund's charges and expenses are taken from the capital, in whole or in part, resulting in possible constraint of capital growth.

Restrictions on Foreign Investment

Some countries prohibit or impose substantial restrictions on investments by foreign entities. There may also be instances where a purchase order subsequently fails because the permissible allocation to foreign investors has been filled, depriving the Target Fund of the ability to make its desired investment at the time.

Derivatives Risk

The Target Fund Manager may invest in derivatives which will be subject to risks. While the judicious use of derivatives by professional investment managers can be beneficial, derivatives involve risks different from, and, in some cases, greater than, the risks presented by more traditional securities investments. Some of the risks associated with derivatives are market risk, management risk, credit risk, liquidity risk and leverage risk. Investments in derivatives may require the deposit or initial margin and additional margin on short notice if the market moves against the investment positions. If no provision is made for the required margin within the prescribed time, the investment may be liquidated at a loss. Therefore, it is essential that such investments in derivatives are monitored closely.

The Target Fund Manager has the necessary controls for investments in derivatives and have in place systems to monitor the derivative positions for the Target Fund. The Target Fund Manager does not intend to use derivatives transactions for speculation or leverage but may use them for efficient portfolio management and/or risk management. Currency risk is simply one of the market risks which the fund will be exposed to and can be hedged using derivatives such as FX forwards/futures. Often the underlying currency risk may be taken on as a result of buying an underlying equity or bond. If the Target Fund Manager does not want to also take the currency risk associated with these underlying assets, the Target Fund may use Forward Foreign Exchange contracts to hedge any currency risk derived from holdings of non-base currency positions. Essentially this use of currency forwards is to hedge currency risk in the Target Fund. The use of FX forwards for this hedging activity does then raise additional operational and guideline risks and these are addressed in the attached detailed description of our derivatives risk management and usage procedures, of which currency hedging is a subset.

The above should not be considered to be an exhausted list of the risks which potential policyholders should consider before investing in the Fund. Potential policyholders should be aware that an investment in the Fund may be exposed to other risks of exceptional nature from time to time.

PRULink Global Growth Fund

Applicable until 31 August 2023

All data is as of 31 December 2021 unless otherwise stated

Risk Management

Forecasting Risk

Potential risks are taken into consideration in the process of sector allocation and stock selection based on analysis on various key factors such as economic conditions, liquidity, qualitative and quantitative aspects of the securities.

System Control

Risk parameters are set internally for each fund, depending on client's risk profile. These risk parameters include limits of issuer bet, group issuer, sector rating and issue size of the securities held in the portfolio.

A front-end office system is in place to monitor portfolio risks, serving as an auto filter for any limitations or breaches.

PRULink Global Growth Fund

Applicable until 31 August 2023

All data is as of 31 December 2021 unless otherwise stated

Other Information

<ul style="list-style-type: none">• Target Market	<p>This Fund is suitable for Policyholders who:-</p> <ul style="list-style-type: none">• Are seeking high capital appreciation over a long term investment horizon.• Have high risk tolerance.
<ul style="list-style-type: none">• Basis & Frequency of Unit Valuation	<ul style="list-style-type: none">• Unit pricing is done daily.• The Unit Price of this Fund on any Valuation Date shall be equal to the fund value divided by the number of units in issue on Valuation Date.• The Fund Value is the value of all the assets of a particular PRULink Global Fund after the deduction of expenses for managing, acquiring, maintaining and valuing the assets of that Fund, tax or other statutory levy incurred by Prudential Assurance Malaysia Berhad (“Prudential”) on investment income or capital gains on the assets of the Fund and any accrued or anticipated income.• Prudential shall value the various PRULink Global Funds at the close of each business day (Valuation Date). However, as the value of the PRULink Global Funds’ investments in various shares, fixed interest securities and money market instruments at the close of a particular Valuation Date will only be known a business day later, the determination by Prudential of the Unit Price of a PRULink Global Fund in respect of a particular Valuation Date shall only be conducted and made known to the Assured 2 business days later (T + 2).• To recoup the cost of acquiring and disposing of assets, a transaction cost adjustment may be made to the fund value to recover any amount which this Fund had already paid or reasonably expects to pay for the creation or cancellation of units.
<ul style="list-style-type: none">• Exceptional Circumstances	<ul style="list-style-type: none">• Prudential shall not be bound to redeem and convert on any Valuation Day more than 10% of any PRULink Global Fund outstanding on such Valuation Day.• Prudential reserves the right in exceptional circumstances (for example, when there is an unusually high volume of sale of investments within a short period) to defer the switching or withdrawal of Units and the surrender of the Policy for a period not exceeding six (6) months from the date of application.• Prudential may suspend unit pricing and policy transaction if any of the exchanges in which the fund is invested is temporarily suspended for trading. In such event, notice for suspension may be published and may be communicated to the Assured upon any request for top-up, switching, redemption or withdrawal to/from any such PRULink Global Fund. <p><i>The list of exceptional circumstances above are not exhaustive, please refer to your policy document for further details.</i></p>

PRULink Global Growth Fund

Applicable from 1 September 2023 onwards

All data is as of 31 December 2022 unless otherwise stated

Features of Fund	
Investment Objective	PRULink Global Growth Fund (“the Fund”) aims to generate long-term returns through investing primarily into a portfolio of assets globally including equities, equity-related securities, deposits, currencies, derivatives or any other financial instruments directly, and/or indirectly through the use of any funds.
Investment Strategy & Approach	The Fund seeks to invest primarily in investment funds [Sub-Fund(s)] to achieve the investment objective. The Sub-Fund(s) will be monitored to assess the performance, processes, styles and positioning. The allocation to, or the Sub-Fund(s) may change if it is deemed unsuitable to meet the Fund’s objectives. <i>Note: Refer to additional disclosure for details of the Sub-Fund(s).</i>
Asset Allocation	The Fund invests up to 100% of the Fund’s NAV in the Sub-Fund(s) determined by the Fund Manager. The balance of the Fund’s NAV will be invested in liquid assets.
Performance Benchmark	The benchmark will vary based on the Sub-Fund(s). At inception, the benchmark is: MSCI AC World Index <i>For more information on benchmark kindly refer to www.msci.com</i>
Fund Manager	Prudential Assurance Malaysia Berhad 198301012262 (107655-U)
Fees & Charges	
Fund Management Charge	1.50% p.a.
Other Charge, if any	Nil

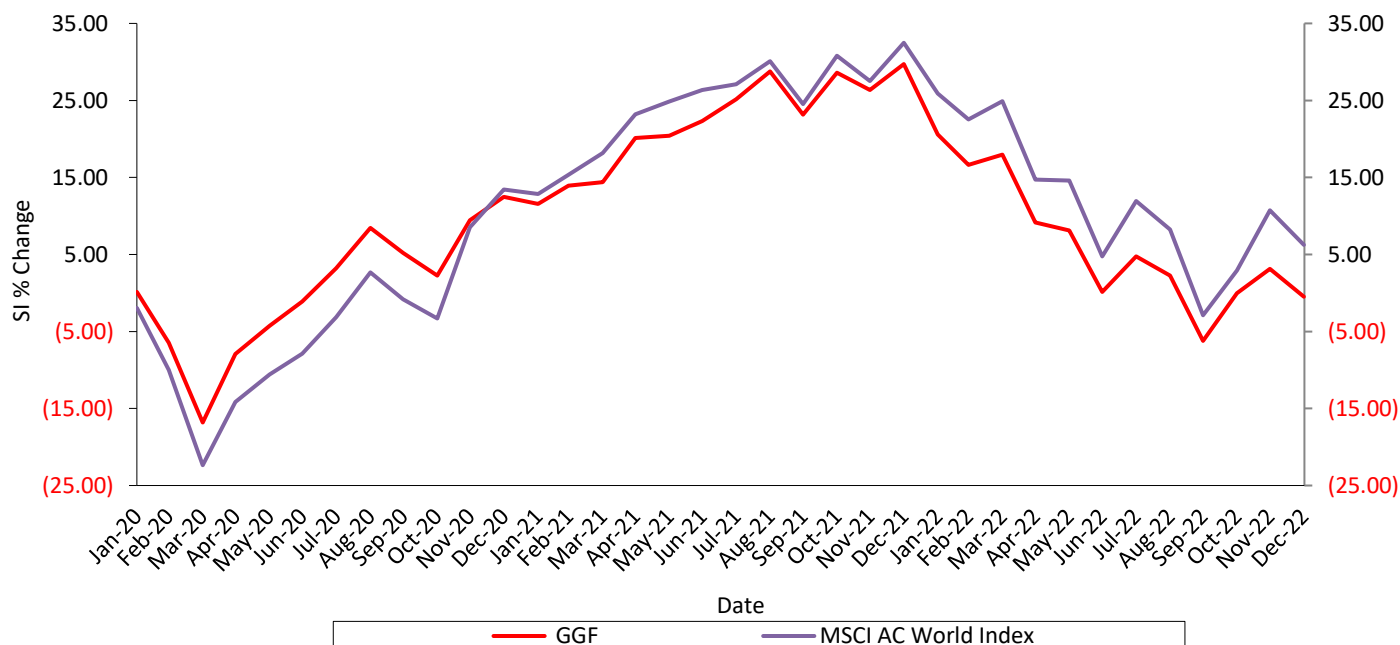
PRULink Global Growth Fund

Applicable from 1 September 2023 onwards

All data is as of 31 December 2022 unless otherwise stated

Fund Performance

PRULink Global Growth Fund Vs. MSCI AC World Index



Notice: The graphs are included for illustrative purposes only. Past performance of The Fund is not an indication of its future performance.

Year	Actual Performance PRULink Global Growth Fund	Benchmark 100% MSCI AC World Index
2020	12.48%*	13.43%*
2021	15.32%	16.68%
2022	-23.28%	-19.80%

*Fund Performance is from fund launch date until year end of the same year (non-annualised return).

Sources: Lipper IM and Bloomberg, 31 December 2022

Notice: Past performance is not an indication of its future performance. This is strictly the performance of the investment / underlying funds, and not the returns earned on the actual premiums paid of the investment-linked insurance product.

Basis of calculation of past performance:

$$= \left(\frac{\text{Net Asset Value at the end of Year } n}{\text{Net Asset Value at the end of Year } n - 1} - 1 \right) \%$$

PRULink Global Growth Fund

Applicable from 1 September 2023 onwards

All data is as of 31 December 2022 unless otherwise stated

Additional Disclosure for PRULink Global Growth Fund

The Fund will invest into a Sub-Fund called United Global Quality Equity Fund - MYR Hedged Class (“Sub-Fund”) which is managed by UOB Asset Management (Malaysia) Berhad. The Sub-Fund, in turn, feeds into United Global Quality Growth Fund (class Z USD Dist) (“Target Fund”) which is managed by UOB Asset Management Ltd, Singapore (“Target Fund Manager”) and sub-managed by Lazard Asset Management LLC (“Sub-Manager of the Target Fund”).

The Sub-Fund seeks to achieve its investment objective by investing a minimum of 90% of its NAV in the Target Fund at all times. Accordingly, the Sub-Fund will have a passive strategy as all the investment decisions will be made at the Target Fund level.

The Sub-Fund Manager may use financial derivatives such as options, futures contracts, forward contracts and swaps for the purpose of hedging. The Sub-Fund Manager may also take temporary defensive positions that may be inconsistent with the Sub-Fund’s investment strategy in response to adverse economic, political or any market conditions. In such circumstances, the Sub-Fund may hold up to 100% of its NAV in liquid assets as a defensive strategy.

The Target Fund seeks to provide long term total return by investing in equity and equity-related securities of companies listed and traded on stock exchanges globally.

The Target Fund focuses on identifying market-leading companies (“Quality Growth Companies”), which the Sub-Manager of the Target Fund Manager believed to have the capability of sustaining high levels of financial productivity (which is assessed by return on capital measures such as return on equity or cash flow return on investment) and that are in a position to reinvest cashflows back into their business at similarly attractive rates of return.

The Target Fund invests primarily in equity securities. Subject to the foregoing, the Target Fund may invest in other securities including, without limitation, exchange traded funds and equity-related securities such as depositary receipts. While the Target Fund is not constrained by market capitalisation, country, sector or industry, the companies it seeks to invest in typically have market capitalisation exceeding USD3 billion with sufficient trading volume.

The Target Fund's investment process first begins with screening the broad universe of securities. From there, the investable universe is reduced to a set of potential investment ideas which are filtered through its team of research analysts and through a proprietary investment tool that identifies companies with patterns of financial productivity metrics that meet the threshold levels for the portfolio. The Target Fund then employs a bottom-up investment approach and proprietary fundamental research to identify Quality Growth Companies that meet its investment focus. The Target Fund considers a range of information across databases such as company financial statements, earnings, industry analysis and academic studies along with other sources such as company suppliers, competitors or regulators. The Target Fund will also consider metrics such as quality and valuation:

- **Quality:** The Target Fund seeks to identify companies with the capability of sustaining high levels of financial productivity and the opportunity to reinvest in the business.
- **Valuation:** The Sub-Manager of the Target Fund incorporates the results of its fundamental analysis into a set of expectations for future financial productivity with a view to identifying companies that are trading below their intrinsic value.

PRULink Global Growth Fund

Applicable from 1 September 2023 onwards

All data is as of 31 December 2022 unless otherwise stated

Financial derivatives instruments, such as forward contracts, futures contracts, options contracts and swaps, may be used or invested in for the purposes of hedging existing positions, efficient portfolio management, or a combination of both purposes. A portion of the Target Fund's assets may be retained in liquid investments or cash for liquidity purposes.

The fund performance for the underlying Sub-Fund United Global Quality Equity Fund - MYR Hedged Class as at 31 December 2022 is as follows:

Year	2022	2021	2020	2019	2018	2017	2016
Net Performance	-25.59%	15.89%	16.15%	28.28%	-2.21%	24.15%	-2.28%*

*Fund Performance is from fund launch date until year end of the same year (non-annualised return).

Note: The above return is for the Sub-Fund (MYR-Hedged Class) which is denominated in MYR, managed by UOB Asset Management (Malaysia) Berhad.

Source: UOBAM as at 31 December 2022

The fund performance for the underlying Target Fund United Global Quality Growth Fund (class Z USD Dist) as at 31 December 2022 is as follows:

Year	2022	2021	2020	2019	2018	2017	2016
Net Performance	-24.72%	3.00%	20.10%	29.39%	-2.83%	26.00%	-2.60%*

*Fund Performance is from fund launch date until year end of the same year (non-annualised return).

Note: The above return (2016-2022) is for the Target Fund which is denominated in USD, sub-managed by Wellington Management Singapore Pte. Ltd. until 31 August 2023, and with effect from 1 September 2023 will be sub-managed by Lazard Asset Management LLC. For the above return (2016 - 2020) is of United Global Quality Growth class USD Dist and return (2021 – 2022) is of the United Global Quality Growth class Z USD Dist.*

Source: UOBAM as at 31 December 2022

Management fees may be charged at the Fund, Sub-Fund(s) and/or Target Fund(s) level. Please note that you will be charged a maximum of 1.50% p.a., being the combined annual fund management charge at the Fund, Sub-Fund(s) and Target Fund(s) levels. In addition, the Fund may incur hedging cost when derivatives (e.g. currency forward) are used for hedging purpose.

Sub-Fund(s) and Target Fund(s) with investment strategies to invest in Exchange Traded Funds ("ETF") or other Collective Investment Schemes may incur additional expenses at the Sub-Fund(s) and Target Fund(s) levels which are taken as part of the investment strategy considerations to deliver the fund performance.

PRULink Global Growth Fund

Applicable from 1 September 2023 onwards

All data is as of 31 December 2022 unless otherwise stated

Investment Risks for PRULink Global Growth Fund

The Fund is subjected to investment risks including the possible loss of the principal amount invested. The value of the units may fall as well as rise. In addition, the Fund is subjected to specific risk including and not limiting to:

General Risks when Investing in the Fund

Market Risk

Market risk refers to potential losses that may arise from adverse changes in the market conditions. Market conditions are generally, affected by, amongst others, economic and political stability. If the market which the Fund invests in suffers a downturn or instability due to adverse economic or political conditions, this may adversely impact the market prices of the investments of the Fund.

Liquidity Risk

Liquidity risk refers to two scenarios. The first scenario is where an investment cannot be sold due to unavailability of a buyer for that investment. The second scenario is where the investment is thinly traded. Should the investments in the Target Fund(s) be thinly traded, this may cause the Fund to dispose the investment at an unfavorable price in the market and may adversely affect investor's investment. This risk may be mitigated through stringent security selection process.

Inflation Risk

This refers to the likelihood that an investor's investments do not keep pace with inflation, thus, resulting in the investor's decreasing purchasing power even though the investment in monetary terms may have increased.

Interest Rate Risk

Interest rate risk is a general risk affecting conventional funds. This is so even though conventional funds only invest in investments that are in accordance with the mandate. The reason for this is because a high level of interest rates will inevitably affect corporate profits and this will have an impact on the value of both equity and debt securities. This risk is crucial in a bond fund since a bond portfolio management depends on forecasting interest rate movements. Prices of bonds move inversely to interest rate movements therefore as interest rates rise, the prices of bond decrease and vice versa. Furthermore, bonds with longer maturity and lower profit rates are more susceptible to interest rate movements.

Credit / Default Risk

Bonds are subject to credit / default risk in the event that the issuer of the instrument is faced with financial difficulties, which may decrease their credit worthiness. This in turn may lead to a default in the payment of principal and interest.

Risk of Non-Compliance

This risk arises from non-compliance with laws, rules and regulations, prescribed practices and the management company's internal policies and procedures, for example, due to oversight by the management company. Such non-compliance may force the management company to sell down securities of the Fund at a loss to rectify the non-compliance and in turn may adversely affect the value of investors' investment in the Fund. To mitigate this risk, the Fund Manager has put in place internal controls to ensure its continuous compliance with laws, rules and regulations, prescribed practices and the Fund Manager's internal policies and procedures.

PRULink Global Growth Fund

Applicable from 1 September 2023 onwards

All data is as of 31 December 2022 unless otherwise stated

Concentration Risk

This is the risk of a fund focusing a greater portion of its assets in a smaller selection of investments. The fall in price of a particular equity and / or fixed income investment will have a greater impact on the funds and thus greater losses. This risk may be minimised by the manager conducting even more rigorous fundamental analysis before investing in each security.

Management Company Risk

The performance of the Fund depends on the experience, expertise and knowledge of the management company. Should there be lack of any of the above qualities by the management company, it may adversely affect the performance of the Fund.

Currency Risk

The Fund is denominated in MYR, while the Sub-Fund(s) and Target Fund(s) may be denominated in other currencies. The performance of the Fund may be affected by movements in the exchange rate between the MYR and the Sub-Fund(s)'s and Target Fund(s)'s denominated currency. Where applicable, a currency hedging instrument or a currency hedged class of the Sub-Fund(s) and/or Target Fund(s) may be used to minimise currency risk.

Derivatives Risk

Derivatives may potentially be used to hedge against any risk that may be derived from investing in the Sub-Fund(s) and/or Target Fund(s), such as, but not limited to, currency risk.

Portfolio Risk

The Fund is intended for investors who can accept the risks associated with investing primarily in the securities of the type held in the Fund. Investments in equities will be subject to the risks associated with equity and equity-related securities, including fluctuations in market prices, adverse issuer or market information and the fact that equity and equity-related interests are subordinate in the right of payment to other corporate securities, including debt securities. Likewise, investments in fixed income securities will be subjected to the risks associated with debt securities including credit and interest rate risk, and the additional risks associated with high-yield debt securities, loan participations and derivative securities. In addition, investors should be aware of the risks associated with the active management techniques that are expected to be employed by the Fund.

Sustainability Risk

The Fund has environmental and/or social characteristics. This means it may have limited exposure to some companies, industries or sectors and may forego certain investment opportunities, or dispose of certain holdings, that do not align with its sustainability criteria. Therefore, the Fund may underperform other funds that do not apply similar criteria. The Fund may invest in companies that do not reflect the beliefs and values of any particular investor.

Exclusion Risk

The Fund does not have strict exclusion of companies that are exposed to environmental, social and governance ("ESG") risk of below certain threshold like companies with revenue generated from thermal coal production and thermal coal power generation.

PRULink Global Growth Fund

Applicable from 1 September 2023 onwards

All data is as of 31 December 2022 unless otherwise stated

Specific Risks when Investing in the Sub-Fund

Risk of Passive Strategy

The Sub-Fund adopts a passive strategy of investing a minimum of 90% of its NAV into the Target Fund at all times. This passive strategy would result in the Sub-Fund being exposed to the risk of its NAV declining when the Target Fund's NAV declines. All investment decisions on the Target Fund are left with the Target Fund's fund manager.

Currency Risk

As the investments of the Sub-Fund may be denominated in currencies other than the base currency, any fluctuation in the exchange rate between the base currency and currencies in which the investments are denominated may have an impact on the value of these investments.

In this case, the Sub-Fund will be investing in the Class Z USD Dist of the Target Fund which is denominated in USD. Hence, fluctuations in the exchange rates of USD against the MYR may affect the NAV of the Sub-Fund, and consequently the NAV per unit of the Sub-Fund.

Investors in the MYR Hedged Class of the Sub-Fund will be subject to a lower currency risk at the Sub-Fund level as the Manager will mitigate this risk by hedging the foreign currency exposure. Investors should note that by employing this hedging, investors would not be able to enjoy the additional currency gains when USD moves favourably against the MYR. Additional transaction costs of hedging will also be borne by investors in the MYR Hedged Class of the Sub-Fund.

Derivatives Risk

Derivatives may potentially be used to hedge against any risk that may be derived from investing in the Target Fund, such as, but not limited to, currency risk.

Risk of Compulsory Realisation of the Target Fund

As the Sub-Fund will be investing a minimum of 90% of its NAV in the Target Fund, any event of compulsory realisation occurred on the Target Fund will have an impact to the Sub-Fund.

Under such circumstances, the Sub-Fund Manager, in consultation with the trustee will call for a unit holder's meeting to decide on whether to terminate the Sub-Fund or replace the Target Fund with a new target fund with similar investment objective.

Sustainability Risk

The Fund has environmental and/or social characteristics. This means it may have limited exposure to some companies, industries or sectors and may forego certain investment opportunities, or dispose of certain holdings, that do not align with its sustainability criteria. Therefore, the Fund may underperform other funds that do not apply similar criteria. The Fund may invest in companies that do not reflect the beliefs and values of any particular investor.

Exclusion Risk

The Fund does not have strict exclusion of companies that are exposed to ESG risk of below certain threshold like companies with revenue generated from thermal coal production and thermal coal power generation.

PRULink Global Growth Fund

Applicable from 1 September 2023 onwards

All data is as of 31 December 2022 unless otherwise stated

Specific Risks when Investing in the Target Fund

Security Risk

Adverse price movements of a particular security invested by the Target Fund may adversely affect the Target Fund's net asset value. The Target Fund Manager strives to mitigate the impact of a particular security risk through portfolio diversification, which will help spread the element of risk.

Fund Management of Target Fund Risk

While the Fund Manager will exercise due skill and care in selecting the Target Fund, it does not have control over the management of the Target Fund and there is no guarantee that the investment objectives will be met. This may result in policyholders suffering losses in their investments in the Target Fund.

The Target Fund may change its objectives and become inconsistent with the objective of the Fund. In such instances, the Fund Manager will replace the Target Fund with another collective investment scheme which the Fund Manager considers to be more appropriate in meeting the objective of the Fund.

Errors in Calculation of the Net Asset Value of the Target Fund's Risk

There is a possibility there are errors in calculation of the net asset value of the Target Fund. In the event such errors occur, the net asset value of the Target Fund will be affected hence, the Target Fund will comply with the rules set forth in the relevant regulatory provisions applicable to the Target Fund. Compensation, if any, paid by the Target Fund (subject to the laws of the jurisdiction in which such Target Fund is domiciled), will be credited to the Fund as and when compensation is received.

In view of the foregoing, policyholders must be aware that there are circumstances where neither the Target Fund nor the Fund Manager will be bound to compensate final beneficial owners.

Liquidity Risk

Liquidity risk here refers to two scenarios. The first scenario is where the allocated liquidity of the Target Fund is insufficient to meet redemption needs. The second scenario is where the Target Fund is thinly traded. Should the investments in the Target Fund be thinly traded, this may cause the Target Fund to dispose the investment at an unfavorable price in the market and may adversely affect investors' investment. This risk may be mitigated through stringent security selection process.

Countries or Foreign Securities Risk

This risk is associated with investments in securities listed or domiciled in countries other than the country of domicile. Any changes in the economic fundamentals, social and political stability, uncertainty or changes in countries' official currencies, currency movements and foreign investments policies in these countries may increase the volatility in asset values, liquidity and default risk which may have an impact on the prices of the securities that the Target Fund invests in and consequently may affect the net asset value of the Target Fund.

Investments in certain markets may be restricted or controlled. In some countries, direct investments in securities may be prohibited and restricted due to regulatory requirements. These limitations may increase transaction costs and adversely affect a security's liquidity and the price in connection with the security.

PRULink Global Growth Fund

Applicable from 1 September 2023 onwards

All data is as of 31 December 2022 unless otherwise stated

The Target Fund Manager will monitor and observe the developments in these countries where assets of the Target Fund are allocated. In addition, the Target Fund Manager will also employ a systematic investment process, which includes regular review, to manage and mitigate this risk.

Currency Risk

The Target Fund's underlying investments may be denominated in their local currency, which may differ from the Target Fund's currency of denomination. The performance of the Target Fund may be affected by movements in the exchange rate between the local currency of its underlying investments and the Target Fund's denominated currency.

Charges to Capital Risk

The Target Fund's charges and expenses are taken from the capital, in whole or in part, resulting in possible constraint of capital growth.

Restrictions on Foreign Investment

Some countries prohibit or impose substantial restrictions on investments by foreign entities. There may also be instances where a purchase order subsequently fails because the permissible allocation to foreign investors has been filled, depriving the Target Fund of the ability to make its desired investment at the time.

Derivatives Risk

The Target Fund Manager may invest in derivatives which will be subject to risks. While the judicious use of derivatives by professional investment managers can be beneficial, derivatives involve risks different from, and, in some cases, greater than, the risks presented by more traditional securities investments. Some of the risks associated with derivatives are market risk, management risk, credit risk, liquidity risk and leverage risk. Investments in derivatives may require the deposit or initial margin and additional margin on short notice if the market moves against the investment positions. If no provision is made for the required margin within the prescribed time, the investment may be liquidated at a loss. Therefore, it is essential that such investments in derivatives are monitored closely.

The Target Fund Manager has the necessary controls for investments in derivatives and have in place systems to monitor the derivative positions for the Target Fund. The Target Fund Manager does not intend to use derivatives transactions for speculation or leverage but may use them for efficient portfolio management and/or risk management. Currency risk is simply one of the market risks which the fund will be exposed to and can be hedged using derivatives such as FX forwards/futures. Often the underlying currency risk may be taken on as a result of buying an underlying equity or bond. If the Target Fund Manager does not want to also take the currency risk associated with these underlying assets, the Target Fund may use Forward Foreign Exchange contracts to hedge any currency risk derived from holdings of non-base currency positions. Essentially this use of currency forwards is to hedge currency risk in the Target Fund. The use of FX forwards for this hedging activity does then raise additional operational and guideline risks and these are addressed in the attached detailed description of our derivatives risk management and usage procedures, of which currency hedging is a subset.

The above should not be considered to be an exhausted list of the risks which potential policyholders should consider before investing in the Fund. Potential policyholders should be aware that an investment in the Fund may be exposed to other risks of exceptional nature from time to time.

PRULink Global Growth Fund

Applicable from 1 September 2023 onwards

All data is as of 31 December 2022 unless otherwise stated

Risk Management

Forecasting Risk

Potential risks are taken into consideration in the process of sector allocation and stock selection based on analysis on various key factors such as economic conditions, liquidity, qualitative and quantitative aspects of the securities.

System Control

Risk parameters are set internally for each fund, depending on client's risk profile. These risk parameters include limits of issuer bet, group issuer, sector rating and issue size of the securities held in the portfolio.

A front-end office system is in place to monitor portfolio risks, serving as an auto filter for any limitations or breaches.

PRULink Global Growth Fund

Applicable from 1 September 2023 onwards

All data is as of 31 December 2022 unless otherwise stated

Other Information

<ul style="list-style-type: none">• Target Market	<p>This Fund is suitable for Policyholders who:-</p> <ul style="list-style-type: none">• Are seeking high capital appreciation over a long term investment horizon.• Have high risk tolerance.
<ul style="list-style-type: none">• Basis & Frequency of Unit Valuation	<ul style="list-style-type: none">• Unit pricing is done daily.• The Unit Price of this Fund on any Valuation Date shall be equal to the fund value divided by the number of units in issue on Valuation Date.• The Fund Value is the value of all the assets of a particular PRULink Global Fund after the deduction of expenses for managing, acquiring, maintaining and valuing the assets of that Fund, tax or other statutory levy incurred by Prudential Assurance Malaysia Berhad (“Prudential”) on investment income or capital gains on the assets of the Fund and any accrued or anticipated income.• Prudential shall value the various PRULink Global Funds at the close of each business day (Valuation Date). However, as the value of the PRULink Global Funds’ investments in various shares, fixed interest securities and money market instruments at the close of a particular Valuation Date will only be known a business day later, the determination by Prudential of the Unit Price of a PRULink Global Fund in respect of a particular Valuation Date shall only be conducted and made known to the Assured 2 business days later (T + 2).• To recoup the cost of acquiring and disposing of assets, a transaction cost adjustment may be made to the fund value to recover any amount which this Fund had already paid or reasonably expects to pay for the creation or cancellation of units.
<ul style="list-style-type: none">• Exceptional Circumstances	<ul style="list-style-type: none">• Prudential shall not be bound to redeem and convert on any Valuation Day more than 10% of any PRULink Global Fund outstanding on such Valuation Day.• Prudential reserves the right in exceptional circumstances (for example, when there is an unusually high volume of sale of investments within a short period) to defer the switching or withdrawal of Units and the surrender of the Policy for a period not exceeding six (6) months from the date of application.• Prudential may suspend unit pricing and policy transaction if any of the exchanges in which the fund is invested is temporarily suspended for trading. In such event, notice for suspension may be published and may be communicated to the Assured upon any request for top-up, switching, redemption or withdrawal to/from any such PRULink Global Fund. <p><i>The list of exceptional circumstances above are not exhaustive, please refer to your policy document for further details.</i></p>