

# PRULink Education Equity Fund

All data is as of 31 December 2021 unless otherwise stated

## Features of Fund

Investment Objective	To maximise returns over medium to long term, taking into account the need to meet guaranteed payouts. This is achieved by investing in high quality shares listed on the Bursa Malaysia and any other financial instruments to be used for hedging the portfolio.
Investment Strategy & Approach	<p><b>Investment Strategy</b> Invest in high-quality shares listed on the Bursa Malaysia directly or indirectly through <b>PRULink</b> Equity Fund or any other <b>PRULink</b> Funds, which invests principally in a diversified portfolio of equities and equity-related securities, that may become available in the future. The fund may also invest in any other financial instruments to be used for hedging the portfolio.</p> <p><b>Investment Approach</b> The Fund Managers believe their disciplined, valuation-driven investment style can generate superior long-term returns.</p> <p>Pricing inefficiencies driven by irrational investor behavior can be successfully exploited through active in-house research and portfolio management. Successful and sustainable exploitation of security mis-pricing requires the disciplined application of our valuation-driven approach. Their process seeks to eliminate the behavioral biases that lead to mis-pricing in the first instance.</p> <p>The Fund Manager imputes conservative assumptions to their earnings forecasts to ensure that the in-house valuation target is achievable. At the same time they do not eliminate potential opportunities by taking calculated risks in periods of volatility that tend to be event driven.</p> <p>The Fund Managers aim for a high degree of consistency in long term performance for all funds, whilst adhering to strict and professional investment guidelines.</p>
Asset Allocation	The Fund invests up to 100% of the Fund's NAV in shares listed on the Bursa Malaysia directly or indirectly through <b>PRULink</b> Equity Fund or any other <b>PRULink</b> Funds, which invests principally in a diversified portfolio of equities and equity-related securities, which may become available in the future. The balance of the Fund's NAV will be invested in liquid assets and any other financial instruments to be used for hedging the portfolio.
Performance Benchmark	FTSE-Bursa Malaysia Top 100 Index (FBM 100)  <i>For more information on benchmark kindly refer to <a href="https://www.bursamalaysia.com/market/">https://www.bursamalaysia.com/market/</a></i>
Fund Manager	Eastspring Investments Berhad (531241-U)

# PRULink Education Equity Fund

All data is as of 31 December 2021 unless otherwise stated

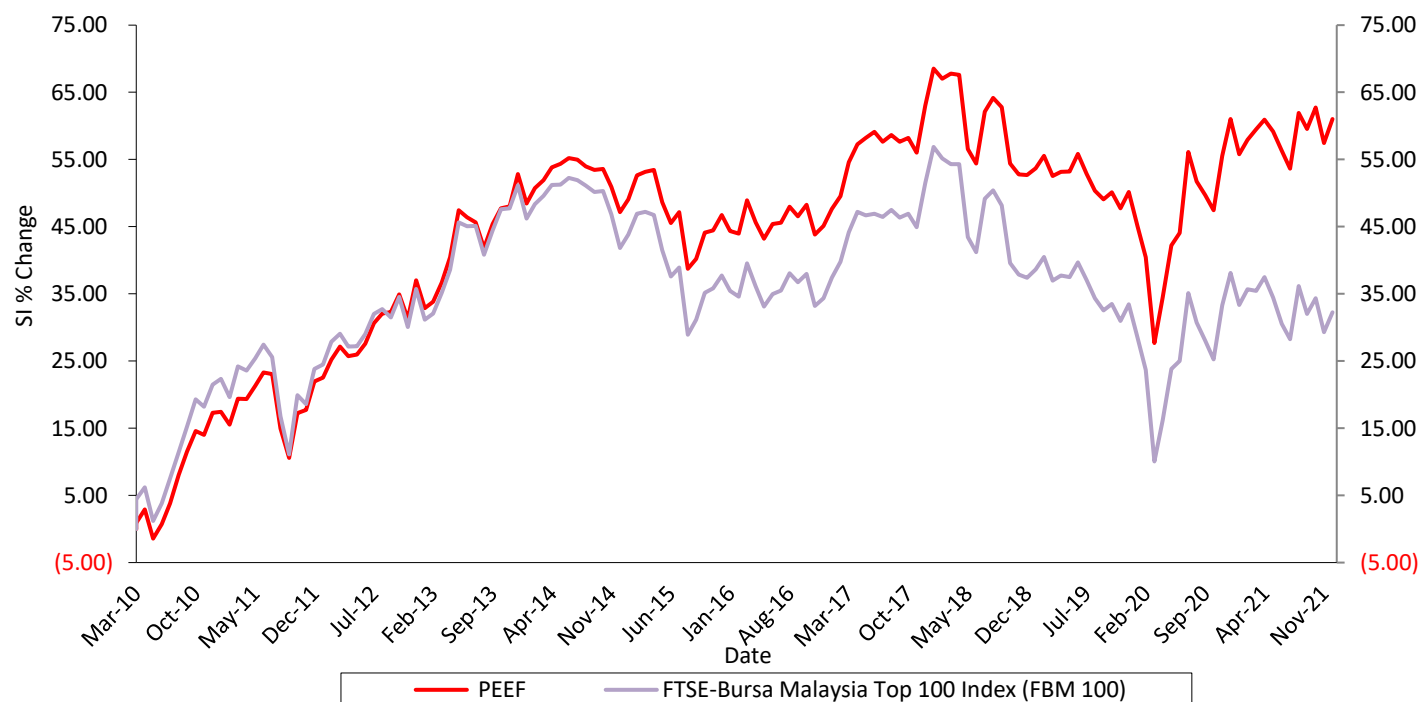
## Fees & Charges

Fund Management Charge	1.50% p.a.
Other Charge, if any	Nil

\* Fund is only available if policyholder purchases **PRUEdusaver**.

## Fund Performance

PRULink Education Equity Fund Vs. FTSE-Bursa Malaysia Top 100 Index (FBM 100)



**Notice: The graphs are included for illustrative purposes only. Past performance of the fund is not an indication of its future performance**

## PRULink Education Equity Fund

All data is as of 31 December 2021 unless otherwise stated

Year	Actual Performance PRULink Education Equity Fund	Benchmark FTSE-Bursa Malaysia Top 100 Index (FBM 100)
2012	12.33%	9.60%
2013	11.54%	11.39%
2014	-3.70%	-6.17%
2015	-0.29%	-2.89%
2016	-1.11%	-2.45%
2017	12.33%	12.74%
2018	-6.33%	-9.28%
2019	-1.67%	-2.88%
2020	7.25%	3.48%
2021	0.00%	-4.24%

Sources: Lipper IM and Bloomberg, 31 December 2021

Notice: Past performance is not an indication of its future performance. This is strictly the performance of the investment/underlying funds, and not the returns earned on the actual premiums paid of the investment-linked insurance product.

Basis of calculation of past performance:

$$= \left( \frac{\text{Net Asset Value for Year } n}{\text{Net Asset Value for Year } n - 1} - 1 \right) \%$$

### Investment Risks

Please refer to the Appendix for the detailed Investment Risks listing below by order of importance:

- (A) Market Risk
- (B) Stock Risk
- (C) Liquidity Risk
- (D) Interest Rate Risk
- (E) Country Risk
- (F) Risk of Non-Compliance
- (G) Concentration Risk
- (H) Management Company Risk
- (I) Inflation Risk
- (J) Investment Managers' Risk

# PRULink Education Equity Fund

All data is as of 31 December 2021 unless otherwise stated

## Risk Management

### Forecasting Risk

Potential risks are taken into consideration in the process of sector allocation and stock selection based on analysis on various key factors such as economic conditions, liquidity, qualitative and quantitative aspects of the securities.

### System Control

Risk parameters are set internally for each fund, depending on client's risk profile. These risk parameters include limits of issuer bet, group issuer, sector rating and issue size of the securities held in the portfolio.

A front-end office system is in place to monitor portfolio risks, serving as an auto filter for any limitations or breaches.

## Other Info

- Target Market

- Policyholders who seek high capital appreciation.
- High risk tolerance.
- Medium to long term investment horizon.

- Basis & Frequency of unit Valuation

- Unit pricing is done daily.
- The Unit Price of a particular **PRULink** Education Fund on any Valuation Date shall be equal to the Fund Value divided by the number of Units in issue on Valuation Date.
- The Fund Value is the value of all the assets of a particular **PRULink** Education Fund after the deduction of expenses for managing, acquiring, maintaining and valuing the assets of that fund, tax (if any) or other statutory levy incurred by the Company on investment income or capital gains on the assets of the fund and any accrued or anticipated income.
- The Valuation Date shall be the date as determined by the Company from time to time, but not less frequently than once a day, for the purpose of determining Unit Prices.
- To recoup the cost of acquiring and disposing of assets, a transaction cost adjustment may be made to the Fund Value to recover any amount which the fund had already paid or reasonably expects to pay for the creation or cancellation of units.

- Exceptional circumstances

- The Company reserves the right in exceptional circumstances (for example, when there is an unusually volume of sale or liquidation of the assets of any of the **PRULink** Education Funds within a short period) to defer the switching or redemption of Units and/or the surrender of the Policy for a period not exceeding six (6) months from the date of application.
- The Company may suspend unit pricing and policy transaction if any of the exchanges in which the fund is invested is temporarily suspended for trading. In such event, notice for suspension may be published and may be communicated to the Assured upon any request for top-up, switching, redemption or withdrawal to/from any such **PRULink** Education Fund.

The list of exceptional circumstances above are not exhaustive, please refer to your policy document for further details.