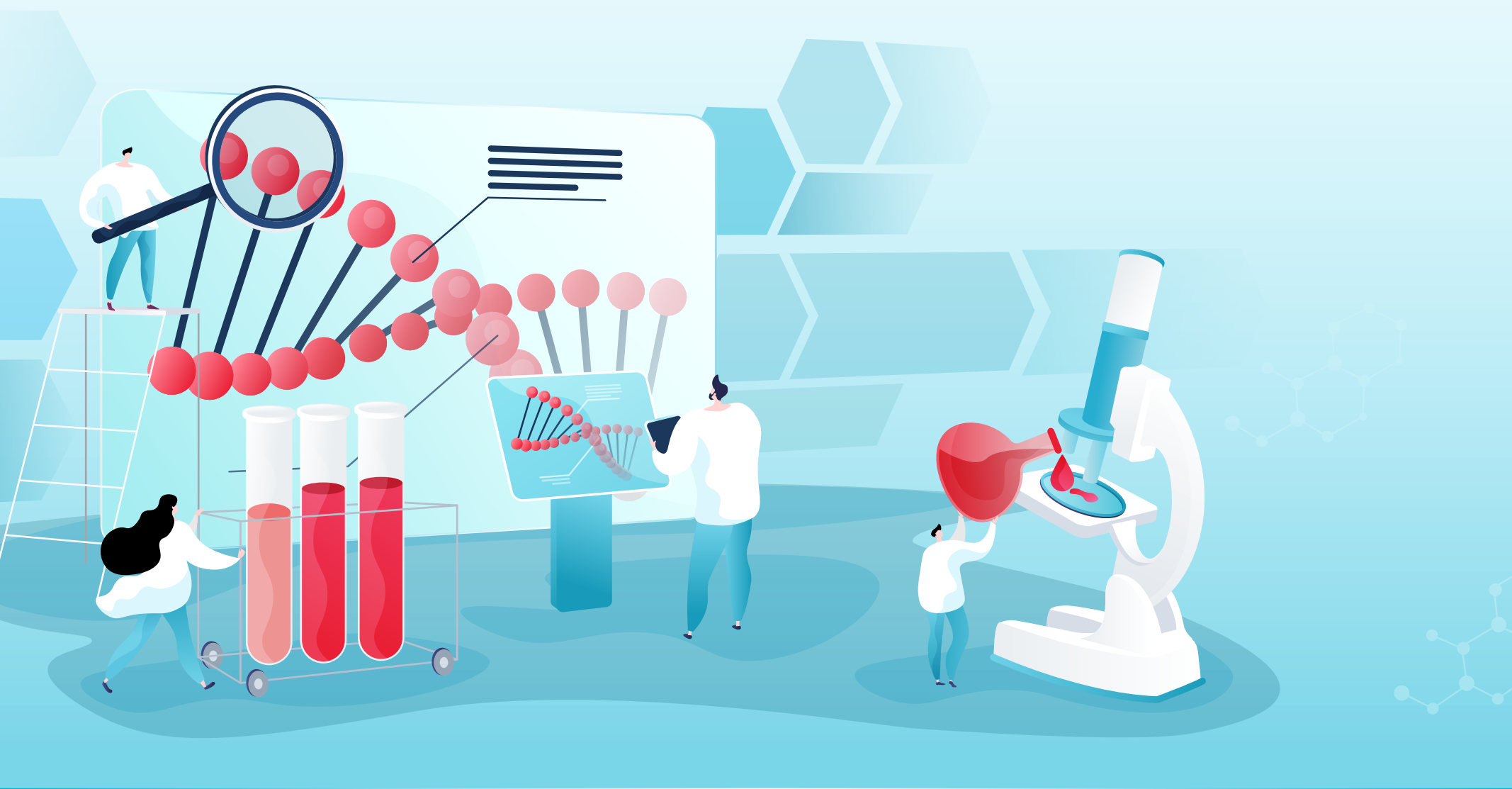


Cancer Precision Medicine



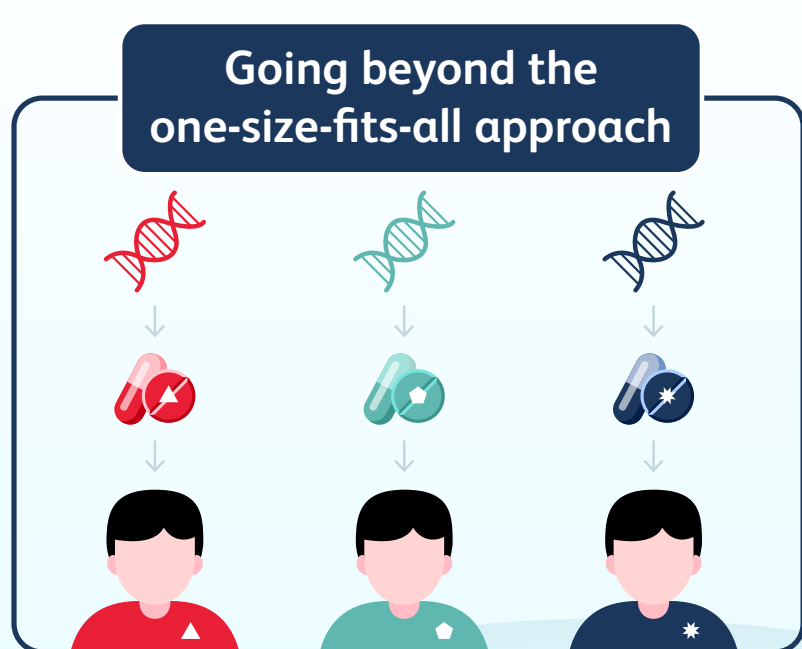
As your trusted life partner for **total health & protection**, we want you to **live with confidence** with Cancer Precision Medicine coverage.

Prudential Malaysia now extends our coverage to include Cancer Precision Medicine, giving our customers peace of mind so that they can be in the best position to focus on their treatment and recovery.



This coverage is offered to all Prudential Malaysia medical plan customers without any additional charges.

What is Cancer Precision Medicine?



- A form of medical care (uses genomic testing) to select the treatments that is based on your individual genetic makeup, lifestyle, and environment.
- Use all the information that is unique to you to accurately diagnose your illness and find the treatment that will work best for you.

Why is it important to have Cancer Precision Medicine coverage?

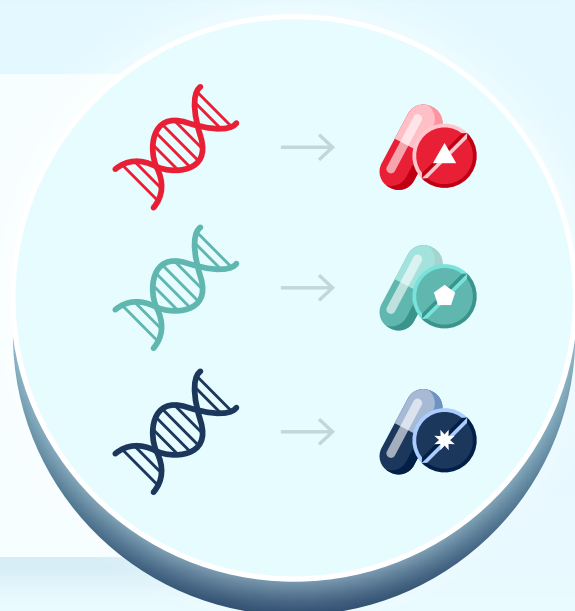


Blow of cancer patients

The number of cancer patients are expected to hit **66,000** annually by 2030¹. Get yourself protected with our medical plan and be prepared for the unexpected challenges in life.

No one-size-fits-all treatment for cancer

This coverage allows you to access genomic testing for a **more accurate diagnosis** of your cancer based on genetic profile and allows physicians to prescribe suitable and targeted treatment. Ensure **better chances of success with lesser side effects**.



Pricey Cancer Precision Medicine

It is **costly** to perform genomic testing and targeted treatment which ranges from **over a thousand ringgit to tens of thousands of ringgit**. Our coverage is now including genomic testing and targeted treatment for you to have peace of mind while focusing on your treatment and recovery.

For Prudential Malaysia medical plan customers, claims on Cancer Precision Medicine is easy:

Pre-authorisation Letter under Hospital Alliance Services (HAS) with cashless facility is available for genomic testing and targeted treatment in accordance with your medical plan's terms and conditions.

For more information about Cancer Precision Medicine and your medical plans, please contact your Prudential Wealth Planner and Takaful Agents.



Terms and conditions apply.

Source:¹<https://www.freemalaysiatoday.com/category/nation/2021/10/15/66000-new-cancer-cases-likely-each-year-by-2030/>