

# PRUElite Flex

Growing wealth across generations.

Our reason is *you*



## Where personalised wealth meets purpose

F

### Flexible Guaranteed Lifetime Income

Receive or reinvest your guaranteed annual income ("FlexIncome") until age 100.

L

### Legacy transfer across multiple generations

Flexibility to split your plan into different policies, distributing wealth according to your needs and goals.

E

### Enrol with Guaranteed Issuance Offer (GIO)

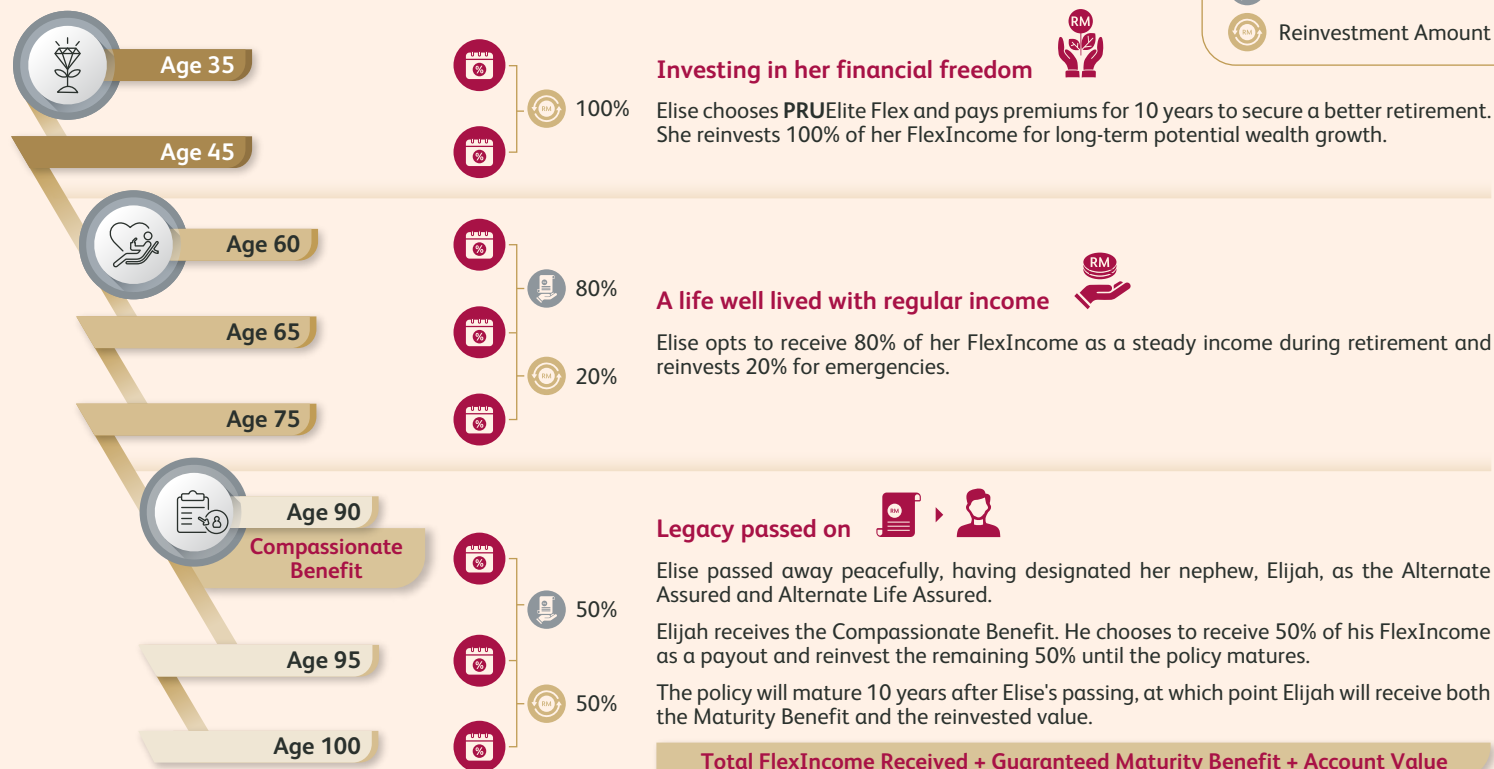
Zero health questions asked and no financial underwriting required.

X

### maXimise your return with diverse range of funds

Gain potential upside with our professionally managed global and local funds.

**Meet Elise** — a dynamic individual who has carved out a successful career as a corporate leader.



Safeguard your achievements and pave the way for future opportunities with **PRUElite Flex**.

Get in touch with me today to learn more.

The benefit(s) payable under eligible certificate/policy is(are) protected by Perbadanan Insurans Deposit Malaysia ("PIDM") up to limits. Please refer to PIDM's Takaful and Insurance Benefits Protection System ("TIPS") Brochure or contact Prudential Assurance Malaysia Berhad or PIDM (visit [www.pidm.gov.my](http://www.pidm.gov.my)).

**PRUElite Flex** is a regular premium non-participating plan that combines protection and savings underwritten by Prudential Assurance Malaysia Berhad 198301012262 (107655-U), which is licensed under the Financial Services Act 2013 and is regulated by Bank Negara Malaysia. This one pager contains only a brief description of the product and is not exhaustive. You are advised to refer to the **PRUElite Flex** Product Disclosure Sheet, Product Illustration, Leaflet and Fund Fact Sheet (if any) before purchasing a policy, and to refer to the terms and conditions in the policy contract for details of the features and benefits, exclusions and waiting periods under the policy.

Terms and Conditions apply. Prepared by Prudential Assurance Malaysia Berhad | Member of PIDM